

# Product Internal Structure

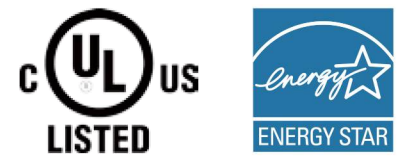


ARCTIC HEAT PUMPS  
 Address: 831 Kapelus Dr, West St. Paul, MB, Canada  
 Phone: 1-800-317-9054  
 E-mail: sales@arcticheatpumps.com Website: www.arcticheatpumps.com

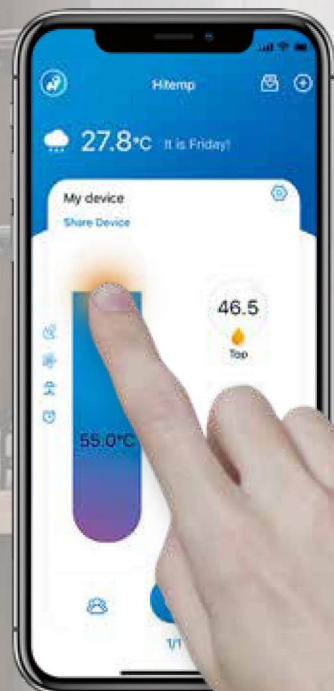


## Arctic Heat Pump Water Heater

Arctic offers the most energy efficient heat pump hot water tank in North America. Our Arctic hot water tank comes with an Energy Star UEF rating of 4.14. Our tank is packaged in a visually appealing outer shell that adds a modern touch to any mechanical room it is placed within. A variety of settings and functions are available from the advanced touch screen interface.



# Smart Heat Pump



# Specification

## PARAMETER

Model	/	HWHP-50	HWHP-80
Heating Capacity	Btu/h	4950	4950
Element Wattage	W	4500	4500
Uniform Energy Factor (UEF)	/	3.88	4.14
Normal Gallon Capacity	gal	50	80
Rated Gallon Capacity	gal	45	72
Power Supply	V/P/Hz	208-240V~1/60Hz	208-240V~1/60Hz
Water Connector	/	NPT 3/4	NPT 3/4
Noise	dB(A)	48	48
Refrigerant	/	R134a	R134a
Operation Range	°F	23~109.4	23~109.4
Water Outlet Temp. Range	°F	100~140	100~140
Max. Water Outlet Temp.	°F	167	167
Net Weight	IB	209	255
Gross Weight	IB	231	293
Height	inch	61-3/8	72-1/16
Diameter	inch	22-1/16	25-3/16

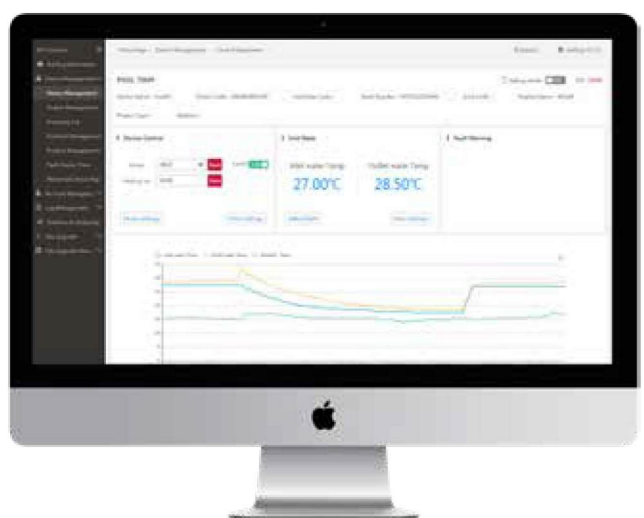


## SELECT MODE

- Standard Heating Mode
- Economic Mode
- Fast Heating Mode
- Vacation Mode
- Intelligent Mode

## MORE BASIC FUNCTIONS

- Time Setting
- Smart Defrost



**Remote Diagnostics**

**OTA Remote Upgrade**



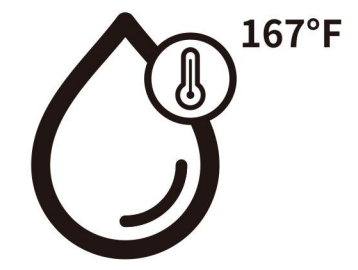
**Duct Adapter**

The ductadapter covers unit's large duct into a small duct for easy duct connection and flexible installation.



**Easy Maintenance**

The front cover can be removed directly for service.



**Max. Water Temp. 167°F**

The maximum water temperature of 167°F and the large capacity water tank ensure the high demand of hot water for large families.



**Energy Efficiency UEF4.14**

The highest UEF rating on the market.